



**Matilde Baffa  
Ugo Rivolta  
european  
architecture  
award 2025**



**In 2007, the Order of Architects Planners Landscapers and Curator of the Province of Milan organized the first edition of Award, with the objective of encouraging research and debate on the theme of social housing at a European level.**

At its debut, the award received recommendations for 46 works; alongside Italian buildings, they included works in Austria, Spain, the Netherlands, Portugal, Switzerland and Bulgaria. The jury awarded the prize to Guillermo Vázquez Consuegra (Spain) for the Housing building in Rota, Cadiz.

The second edition of 2009 received recommendations for 40 projects from twelve European Countries, extending significantly the geographical origin. The prize went to architect Péter Kis (Hungary) for the Práter Street Social Housing in Budapest.

The third edition, held in 2011, received recommendations for 51 projects from eleven European countries, with the new entry of Slovakia. The prize went to Zanderroth Architekten (Germany) for the complex BIGyard built in Berlin.

The fourth edition, held in 2013, received recommendations for 44 projects from eight European countries, with the new entry of Ireland. The jury, under its president Sascha Zander, awarded the prize Hiphouse in Zwolle, built by Atelier Kempe Thill (Netherlands).

The fifth edition of 2015 received 49 projects from 10 European countries. The jury, chaired by Carmen Espegel, awarded the Student Housing project at Sant Cugat del Vallès, built by H Arquitectes and DATAE.

The sixth edition of 2017 received 20 projects from 8 European countries. The jury, chaired by David Lorente Ibáñez, awarded the Social housing building Haus A, built in the Hunziker area in Zurich, by Duplex Architekten (Switzerland).

The seventh edition of 2019 received 19 projects from 6 European countries. The jury, chaired by Monique Bosco-von Allmen, awarded the Housing on Lisbjerg Bakke in Lisbjerg (Aarhus), built by Vandkusten Architekten (Denmark).

The eighth edition, held in 2021, received 29 projects from 7 European countries. The jury, chaired by Søren Nielsen, awarded the 85 social housing in Cornellà, Barcelona, Spain, built by Peris+Toral Arquitectes.

The ninth edition, held in 2023, received 19 projects from 7 European countries. The jury, chaired by Marta Peris and José Toral, awarded the Social Housing 1737, in Gavà, Barcelona, built by H Arquitectes (Spain).

# MATILDE BAFFA UGO RIVOLTA EUROPEAN ARCHITECTURE AWARD

## tenth edition 2025

### 1. contents and objectives organizer

The new edition of the Award confirms the idea of bringing the finest social building designs constructed in Europe over the last five years to the attention of a wider public. It likewise confirms its intention of becoming an international point of reference for research and debate in this area, highlighting the importance of the overall quality of the constructed environment and the sustainability of architectural design.

### 2. award organizer

Order of Architects, Planners, Landscape Architects and Conservationists of the Province of Milan with his Foundation, Via Solferino 19 - 20121 Milan, Italy. Opening hours: 9 am - 1 pm; 2 - 6 pm

### 3. procedures

#### 3.1 award form and official language

The award is organized in two stages, and it will be a transparent process. Documentation consigned can be in Italian and/or English.

#### 3.2 conditions for entry

The Award is open to architects and engineers registered in their respective professional associations according to the provisions of the respective countries. Projects built, ended and consigned between January 2020 and December 2024 in any of the 27 nations in the European Union, Switzerland and United Kingdom, can be entered.

In order to take account and promote the complexity and heterogeneity of the European social housing landscape, social housing is intended as residential buildings promoted by public or private institutions, due to satisfy a demand for lodging which cannot be satisfied by the free market. Applications will be accompanied by a candidature report where it will be required to argue the social meaning of the project, following the proposed path.

The projects may be nominated by planners, (each author can recommend just one of his or her own works) public or private institutions and agencies, cultural or sector associations, universities, real estate developers, or individuals operating in the public housing field, as well as the award organizer.

The projects may also be nominated by the members of the Advisory Board of the Award, who, following a published announcement, will be invited by the Scientific Secretariat to nominate buildings they

deem worthy. The indications of the reports must be received by the Award Scientific Secretariat by **Thursday 3 July 2025**, subsequently the designers of the projects reported will be informed and invited to participate, by uploading the application for the stage one, by **Wednesday 10 September 2025**.

The different criteria for collecting applications have the aim of expanding participation to the Award: all applications will be submitted, without any prior selection, to the evaluation of the jury.

Projects recommended by parties differing to the designers must be accompanied by a letter in which the designer gives his/her consent to the work's participation in the Award. In case of a work designed by a team, the members must indicate a single reference person, whose name must be communicated to the Award Scientific Secretariat.

#### 3.3 award scientific secretariat

The Award Scientific Secretariat has its office at the Order of Architects P.P.C. of the Province of Milan. Via Solferino 19, 20121 Milan. +39.02.62534242 e-mail: [premiobaffarivolta@architettura.mi.it](mailto:premiobaffarivolta@architettura.mi.it)

#### 3.4 conditions of exclusion

The following are not allowed from entry into the competition:

- a) full or substitute members of the jury panel, members of the Award Scientific Secretariat, their relatives and relations to the third degree, their employees and collaborators, and all those who habitually and familiarly work with them, even if on an informal basis;
- b) members of the Council of the Order of Architects P.P.C. of the Province of Milan;
- c) those who were involved in the compilation of the competition regulations and organization of the award.

#### 3.5 award jury panel

The jury panel is composed of five full members and two substitute members.

Full members:

- 1 Frédéric Chartier (France)
- 2 David Lorente Ibáñez (Spain)
- 3 Marco Peverini (Italy)
- 4 Enrico Scaramellini (Italy)
- 5 Paola Viganò (Italy)

Substitute members

- 6 Maite Garcia Sanchis (Italy)
- 7 Mauro Marinelli Marinelli (Italy)

## 4. application procedures in stage one

### 4.1 required documentation

To participate in the first stage of the contest, applicants must recommend the project online on [premiobaffarivolta.ordinearchitetti.mi.it/entry-form-2025/](https://premiobaffarivolta.ordinearchitetti.mi.it/entry-form-2025/) with all documentations required in attachment A of the award notice.

### 4.2 application deadline

The documentation must be uploaded in the entry form on the website [premiobaffarivolta.ordinearchitetti.mi.it/entry-form-2025/](https://premiobaffarivolta.ordinearchitetti.mi.it/entry-form-2025/) by **Wednesday 10 September 2025**.

### 4.3 additional information and questions

Any eventual requests for clarification regarding compilation of the form can be submitted exclusively by electronic mail to the address: [premiobaffarivolta@architettura.mi.it](mailto:premiobaffarivolta@architettura.mi.it) by **Wednesday 9 July 2025**. Within **14 July 2025**, the Award Scientific Secretariat will publish a summary of all the questions received and their answers on the website [premiobaffarivolta.ordinearchitetti.mi.it](https://premiobaffarivolta.ordinearchitetti.mi.it)

### 4.4 jury panel evaluation process

The Scientific Secretariat will verify whether the documentation supplied complies with the Award notice and submit the same to the jury panel, which will evaluate the projects entered and select those to be admitted to the final stage.

The jury's panel decisions are final and indisputable.

Decisions are made by simple majority vote. Jury panel meetings are considered as effective when all its full members are present.

Should a permanent member declare that he cannot take part in jury panel operations, he will be definitively replaced by a substitute member nominated by the President. Substitute members take part in jury panel operations but they do not have the right to vote.

A secretary taking minutes will be present during jury operations. Likewise a representative of the Order of Architect P.P.C. of the Province of Milan may be present, without the right to vote.

Designers accepted for the second stage will be informed by electronic mail communication by **14 October 2025**.

The list of the projects accepted for the final stage will also be posted at the website [ordinearchitetti.mi.it/it/premi-e-concorsi/premio-baffa-rivolta](https://ordinearchitetti.mi.it/it/premi-e-concorsi/premio-baffa-rivolta)

## 5. conditions for participating in second stage

### 5.1 required documentation

The designers whose projects are admitted to the second stage must submit the following documentation to the Award Scientific Secretariat by **Friday 21 November 2025**:

a) two panels in UNI A0 format (base 840 mm x height 1188 mm), arranged vertically, mounted on forex 5 mm., with, at the bottom, a 5 cm strip containing the name and the location of the project and designer's data.

#### panel 1

- illustration of the territorial, urban and land;
- scape context of the project (general plan and/or ground plan, aerial photograph), architectural representations: plans, elevations and significant sections.

#### panel 2

- perspective or axonometric views;
- details of the plans, elevations and architectural details, at whatever scale;
- photographs of the operation, and any other methods considered useful for illustrating the project.

b) paper copy of the panels reduced to A3 size.

c) a report in A4 format consisting of no more than 5000 characters, cover page excluded, containing all the information required to fully describe the project. The report must be written in Italian and English.

d) a usb key containing all the documents submitted (drawings and reports) in the following formats:

- doc for texts;
- jpg at 300 dpi for the images;
- pdf and jpg for the drawings;
- the two panels should also be supplied as jpg files in A3 .jpg format at 300 dpi and 72 dpi.

e) an envelope containing: the name of the designer/designers, with full personal details and information on membership of the respective professional association.

Materials differing from the above, or arriving after the delivery deadline, will not be accepted.

### 5.2 submission deadline – second stage

The full documentation must be submitted to the award secretariat by **Friday 21 November 2025**.

### 5.3 jury panel evaluation process

Before examining the projects, the Award Scientific Secretariat will verify that the documentation satisfies the requirements of the award notice, passing them on to the jury panel after approval. In its evaluation, the jury panel, in addition to architectural quality, will also take into account the appropriateness of the project within the context, the relationship between housing and other correlated functions, ecological and social sustainability.

### 5.4 award

The jury will select a winning project, which will award a prize money of 10.000,00 €. The jury will also indicate two projects worthy of mention in the themes of research and technical and constructive

innovation and typological experimentation. Interesting projects will also be highlighted.

#### **5.5 announcement of the winners and publication of the results**

The results of the award will be announced, duly informing all participants, by **Tuesday 16 December 2025**. Results will also be published on the website: [ordinearchitetti.mi.it/it/premi-e-concorsi/premio-baffa-rivolta](http://ordinearchitetti.mi.it/it/premi-e-concorsi/premio-baffa-rivolta)

By participating in the award, contestants allow the Order of Architects P.P.C. of the Province of Milan to use all materials submitted for publications or public exhibition.

### **6. final rules**

Any difference with respect to the provisions contained in the award notice is motive for exclusion from the award.

In accordance with privacy legislation, the competitors' personal data are gathered and processed solely for purposes connected to the management of the competition and publication of the documentation.

The complete informative is available [here](#).

### **7. calendar**

Wednesday 4 June 2025 - publication of Award notice.

Thursday 3 July 2025 - deadline for reporting of works by the Advisory Board.

Wednesday 9 July 2025 - deadline for presentation of questions.

Monday 14 July 2025 - publication of answers.

Wednesday 10 September 2025 - deadline for submission of projects documentation stage one.

Tuesday 14 October 2025 - publication of results of the stage one.

Friday 21 November 2025 - deadline for submission of projects documentation for second stage.

Tuesday 16 December 2025 - publication of the second stage results.



Ugo Rivolta (1929-2005)

Was born in Novara and later moved to Milan, where he graduated in Architecture and he took his first job at the BBPR office participating in the design and building of Torre Velasca (1951-57). He later founded his own architectural practice together with Matilde Baffa, with whom he developed a long and happy union both professionally and privately. He worked with great professional discipline, rigorous and careful to transpose peoples needs in appropriate architectural solutions. He worked on many social building projects, among these stands out Social housing estate for 6500 inhabitants in Quarto Cagnino, Milan (1969-1974), designed with a large team of architects: an imposing urban project recalling the ideal of Le Corbusier's redents, trying to shape a convenient urban landscape thought big size, design consistency and inclusion of community services. In his last years he resumed also the training of young generations, already practiced with Gio Ponti and Ernesto N. Rogers, teaching at the Faculty of Civil Architecture of the Politecnico di Milano. Rivolta was a shining example of a designer unwilling to compromise, being skilled to listen to and to set up dialogue with the building process of a community in the urban environment.



Matilde Baffa (1930-2016)

Architect, she was cadet of Franco Albini and Ernesto Nathan Rogers; she was graduated at Politecnico di Milano in 1956. He collaborates with Casabella Continuità magazine under the direction of Rogers and takes an active part in the Movimento Studi Architettura. In the academic field, he first joined as assistant Rogers and Albini, and subsequently independently since 1968 when he obtained the chair of Architectural Composition. The academic activity is alongside the professional one: with the architect and husband Ugo Rivolta opens a professional studio that will be a field of experimentation of many themes and insights into theoretical research. Among the publications are *"Lo studio delle piante e la progettazione degli spazi in alloggi minimi: scritti e progetti dal 1906 al 1957 / Alexander Klein"*; *"Il movimento architettonico per l'architettura 1945-1961"*; *"Strumenti per il progetto. The House"*. After the death of her husband, along with the Order of the Architects of Milan, she was committed to the creation of the "Ugo Rivolta European Architecture Award" dedicated to the best social housing architectures in Europe.



## first edition 2007



Guillermo Vázquez Consuegra  
Social housing in Rota, Cadiz, Spain

The building for social housing designed in an expansion area north of Rota (Cadiz) has won a national contest organized by the Junta de Andalucía. It is a VPO block (Vivienda de Protección Oficial) composed of 90 flats, covering the final lot of a low cost residential dwelling regulated by a detailed plan foreseeing a patio arrangement for the component blocks. The conceptual choice deviates from the classical typology of the closed block which is typical of social dwellings of the 19th century, in which the internal private space and the external public space are clearly defined.

On the contrary, a building with a direct connection between both spaces was proposed, transforming the internal space, which is usually introspective and closed on itself in nature, into a space which is extended and dynamic.

The irregular shape of this gardened courtyard, created by differently directed lines, generating continuous directions shifts in the facades, provides different perspectives and an interplay between light and shadow.



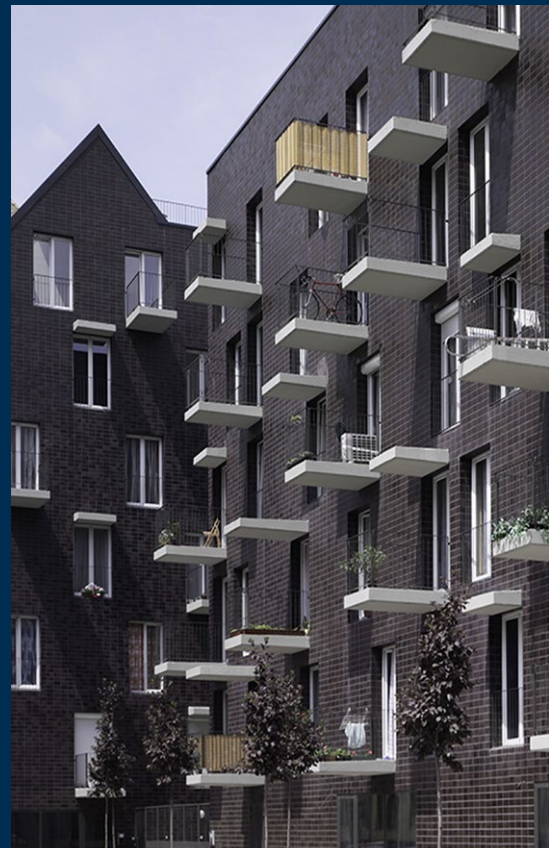
## second edition 2009



Péter Kis  
Práter Street Social Housing Budapest, Hungary

The building, located in a dense residential area of the last century in Budapest, has the alignments of surrounding buildings as a theme for the project. The purpose consist on not imposing its presence on the surrounding buildings, buildings of lesser size than the project; this is addressed through the fragmentation of the intervention in two different volumes. They, on the one hand, follow the shape of the building adjacent to the fire wall leaning, on the other side to close the fourth side of the courtyard. The building along the street leaves a generous public space to the city.

The two blocks generates an inner garden, that visually connects the street to the inner space of the new building. The two volumes are linked by thin bridges of concrete, which continue at different level inside the galleries and become the key element of the entire project.



## third edition 2011



Zanderroth Architekten  
BIGyard, Berlin, Germany



An urban residential estate – individual homes, a large garden, green roofs, expansive views, entrances with direct access from the street to the homes, and rear parking spaces: Project BIGyard is the focused implementation of the dream of a single family home in the heart of Berlin. The street façade faces north and a listed church flanks one side. Responding to the difficult conditions, three different typologies were developed with unmistakable characteristics. The street side townhouse construction is only 4 storeys high, to prevent overshadowing the three storey firewall garden houses and garden. The garden is raised to the 1st floor level for additional light, with the garage beneath it. The advantages of one's own home, combined with the density of a residential estate, give new significance to the aspect of community. The development reflects precisely that combination of community and privacy. The buildings have several entrances providing independent access, while paths in the courtyard, lobby, garage and street repeatedly overlap. The project's size allowed a series of communal facilities.



## fourth edition 2013



Atelier Kempe Thill  
Hiphose, Zwolle, Netherlands



The Hiphouse project is a prototypical project: a radical minimization of architectural means and a visible assertion of the processes and technologies of the building process helped to realize a maximum of living quality. The building block, measuring 23m x 32m and providing 8 units per floor, has a very limited facade surface in relation to its floor area; this favourably affects building costs and enables the high quality detailing of the facade. The housing units are organized around a central core containing a double stair and an elevator. The plan layout allocates the larger apartments to the spatially interesting corners, thus creating apartments with double orientation. The smaller studio apartments either face east or west, guaranteeing optimum sunlight for all apartments. At the core of the building, the atrium lends an unexpected spatial generosity, which measures a vertical 26m and is illuminated by a skylight; it becomes an area for social interaction between inhabitants and adequately expresses the collective of an expedient alliance of tenants.

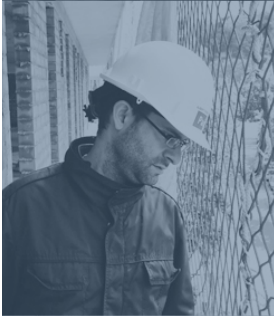




## fifth edition 2015



H Arquitectes and dataAE  
Student Housing, Sant Cugat del Vallès, Spain



The new dwelling house for university students is located in the same block as the Vallès Architecture School. The project proposed intends to keep its balance among the existing buildings, outside areas and the new dwelling house, which is formed from two parallel to street blocks layed out over two floors and separated by a central atrium. For it is a dwelling house for architecture students, we have come up with a program that permits intense connections among the users both individual and group level, owing to the interior flexibility of the apartments and the potential use of the atrium as an event space. The project banks on industrialized construction by using just one housing module type made of pre- formed concrete without partition walls. Each unit has just the necessary fixed elements, simplifying finishing and installations. Most of the components are installed and assembled by dry-build systems so every module and its finishing can be dismantled and reused or highly recyclable. The building is layered out over two floors in order to take advantage of the existing topography making accessible entrances without the need of using elevators.



## sixth edition 2017

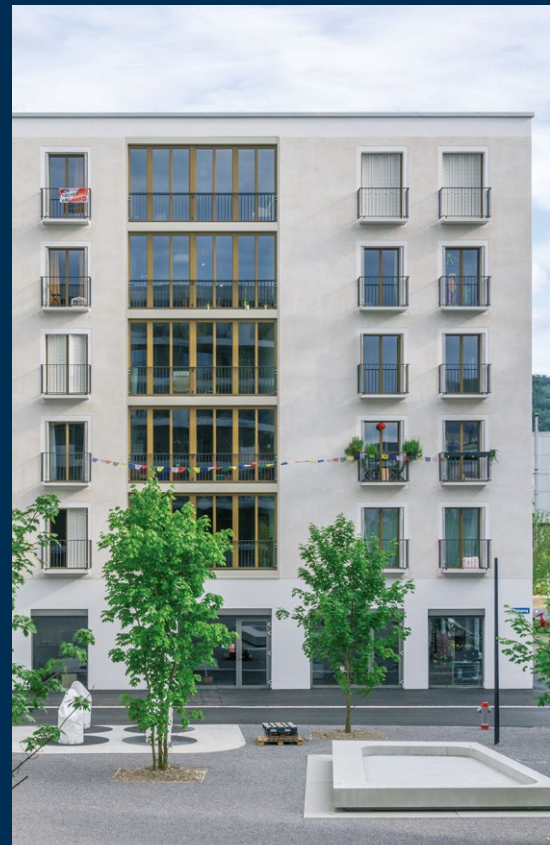


Duplex Architekten  
Haus A, Hunziker Area, Zurich, Switzerland



The cluster apartments of the «House A» are a new type of modern flat-sharing community with a generous common area (living/dining) and sleeping areas each with a separate bathroom. Smaller, private apartment satellites are coupled to larger common areas. Since the kitchens and living rooms need not be fully laid out for each private unit, less space is required. As a result, shared kitchens and joint living rooms can be planned more generously. The retreat to one's private sphere is nonetheless possible at all times because each private room also includes an individual bathrooms and a small kitchenette.

The compact building shape and the decision in favour of a single-layer wall construction made it possible to achieve very low energy consumption values without additional insulation. However, the limited load-bearing capacity of the porous blocks normally allows only three to four storeys.



## seventh edition 2019



Vandkusten Arkitekter  
Housing on Lisbjerg Bakke, Denmark

'Sustainable Non-profit Housing of the Future' was the ambitious headline of the open competition for a series of demonstration housing schemes launched in 2014 by the Ministry of Cities, Housing and Rural Areas, the city of Aarhus, and the non-profit housing administrator AL2bolig. Vandkusten won the competition and designed with a new hybrid wood-based construction system, the 40 units finished in 2018 is Vandkusten's idea of contemporary Danish wood architecture.

The 2-4 storey housing scheme is located in the hilly suburb Lisbjerg just 10 km from Aarhus. It has been designed as a small village with two dense housing clusters, each with a little 'square', and connected with a narrow street.

A main driver for the designers' have been the aim to create a synergy between the technical potential of the building system and the social identity derived from it, such as the influences on the variation and flexibility of the housing scheme and the mental and physical effects of living with wood.

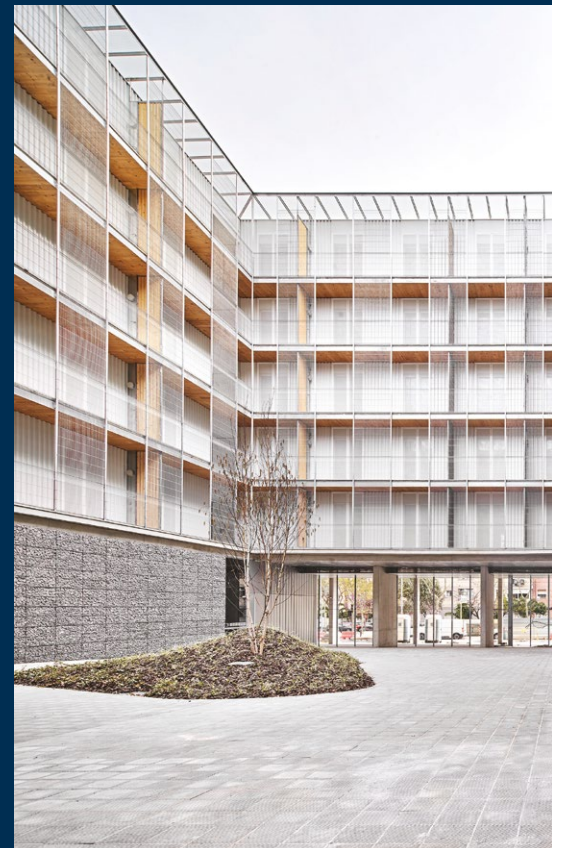


## eighth edition 2021



Peris+Toral Arquitectes  
85 social housing units in Cornellà, Barcelona

The building is organized around a courtyard that articulates a sequence of intermediate spaces. On the ground floor, a porch opens up to the city, anticipating the doorway of the building and filtering the relationship between public space and the courtyard that acts as a small plaza for the community. The four vertical communication shafts are situated at the four corners of the courtyard so that all the occupants converge and meet in the plaza, which represents a safe space from a gender perspective. On the model floor, entry to the apartments is from the communication shaft and the private terraces that make up the ring of outdoor spaces that overlook the courtyard. The building's general floor plan is a matrix of communicating rooms. There are 114 spaces per floor, all of similar dimensions, eliminating both private and community corridors to make the maximum use of the floor space. The server spaces are laid out in the central ring, while the rest of the rooms, of undifferentiated use and size (13 m<sup>2</sup>), accommodate different forms of occupation.



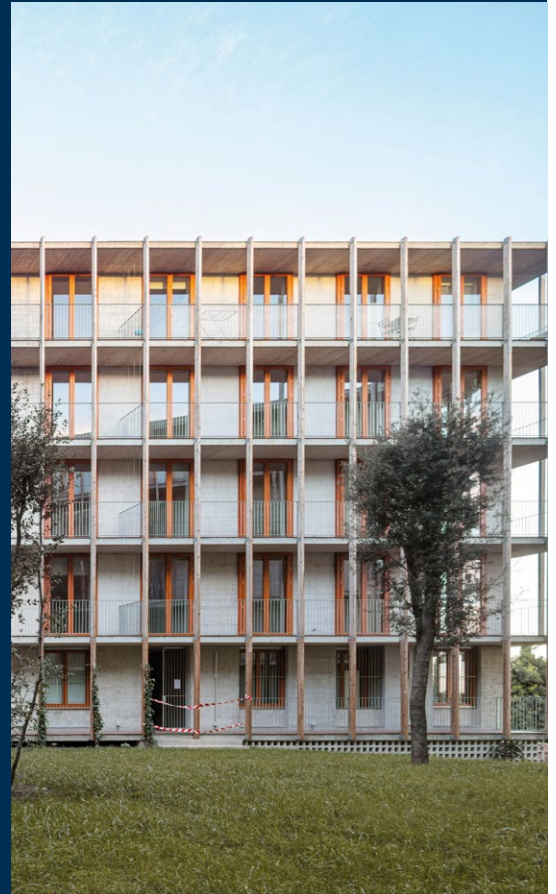


## ninth edition 2023



H Arquitectes  
Social Housing 1737, Gavà, Barcelona, Spain

The volumetric organization of this project encourages the biological and recreational continuity between the Serra de les Ferreres zone and the Llobregat Agricultural Park in Gavà, complementing the longitudinal circulation with new transversal links that facilitate access to the block. Opening the interior corners of the complex prevents potentially insecure dead zones, while the staggered buildings adapt to the natural slope of the plot. Wood and vegetation complement the materiality of the concrete outer walls. All rooms face outward, toward the landscape. At the same time, however, these rooms enclose a cloister-like central atrium where the services and circulations are concentrated, giving generous natural light and cross ventilation+ to all the spaces. This layout yields 136 apartments. Each apartment is shaped by a series of identical non-hierarchical modules, each 10.6 m<sup>2</sup>, which can be used as living room, kitchen, or bedroom, with outward-facing transition spaces surrounding each room. Along the outer wall, a continuous 1.5-meter-wide balcony runs toward the atrium while an almost symmetric corridor space acts like a glazed porch and converts bathrooms, storage space, or lounge room annexes.





**ORDINE E FONDAZIONE DELL'ORDINE**  
DEGLI ARCHITETTI, PIANIFICATORI, PAESAGGISTI  
E CONSERVATORI DELLA PROVINCIA DI MILANO

**Matilde Baffa Ugo Rivolta European Architecture Award**

is an initiative of the Order of Architects P.P.C. of the Province of Milan, organized by its Foundation

**Delegate counselors of the Order**

Lorenzo Bini

**Scientific secretariat and coordinator**

Manuele Salvetti

**Advisory board**

Monique Bosco-von Allmen, Massimo Bricocoli, Carles Muro.

[ordinearchitetti.mi.it](http://ordinearchitetti.mi.it)

[ordinearchitetti.mi.it/it/premi-e-concorsi/premio-baffa-rivolta](http://ordinearchitetti.mi.it/it/premi-e-concorsi/premio-baffa-rivolta)

[premiobaffarivolta.ordinearchitetti.mi.it](http://premiobaffarivolta.ordinearchitetti.mi.it)

e-mail: [premiobaffarivolta@architettura.mi.it](mailto:premiobaffarivolta@architettura.mi.it)

+39 02.62.534.242

**With the patronage of:**



CNA  
PPC

CONSIGLIO NAZIONALE  
DEGLI ARCHITETTI  
PIANIFICATORI  
PAESAGGISTI  
E CONSERVATORI



# ATTACHMENT A

## ENTRY FORM 1° STAGE

to be filled in: [premiobaffarivolta.ordinearchitetti.mi.it/entry-form-2025/](https://premiobaffarivolta.ordinearchitetti.mi.it/entry-form-2025/)

**Matilde Baffa  
Ugo Rivolta  
european  
architecture  
award**



### A Name

Project title

Project submitted by

### B Location

Country

City/town

Address

### C Author

Designer or design team

### D Details

Plot area mq

Gross Area mq

*Total area of all floors as measured to the outside surfaces of exterior walls. Including halls and stairways. Excluding ground floor balconies, porches, other open structures, balconies and outside unroofed corridors and the area of elevator shafts (except on the ground floor)*

of which

residential %

public/communal areas %

facilities for the public %

business/trade %

offices %

Number of residential units

Typology of users (mark the typologies)

☐ families

☐ old-aged people

☐ students

☐ foreigners/immigrants

☐ temporary residents

☐ other

Total building costs Euros

*The whole cost bear by the constructor. Including foundations, all structures and building works (both over and underground), internal and external finishes and external works. Excluding the buying cost of the site and these due to any environment reclamation.*

Building Cost = Total Bulding Cost / Gross Area

Floor area ratio = Gross Area / Plot Area

Work started on date

Work completion date

### E Ownership

Promoter

Allotment rule

Reduction cost percentage compared to the market value

assignment	%
rent	%

## F Recommending party

The project has been submitted by:

Name and surname	
Position	
Address	
Postal code	
City	
Country	
Telephone	Mobile
E-mail	Website

## G Candidature report

Economic Sustainability (cost of construction max; rental/sale cost compared to market price)

Social Sustainability (rules of allocation; protection of fragile categories; involvement of inhabitants in the building process; community accompaniment in the life of the building)

Urban Sustainability (functional mixité; common spaces and shared living)

Environmental Sustainability (techniques and strategies for environmental saving)

## H Documentation to be uploaded

Diagrams in pdf format

Urban context
Communal/typological approach

Drawings in pdf format

General plan (scale 1: 500 / 1: 1000)
All plans of the building (1:200)
Plan of the typologies (1:100)
Significant section (1:200)

Images of the work (1 zip folder with max 10 images in jpg format)

Brief description of the project (max 2,400 characters, .doc format. In English and, optional, in Italian)

Programme/functions
Urban context/approach
Design approach
Environmental sustainability
Economic sustainability
Social sustainability

## I Designer's approval

Designer or person of reference nominated by the team

Design team
-------------